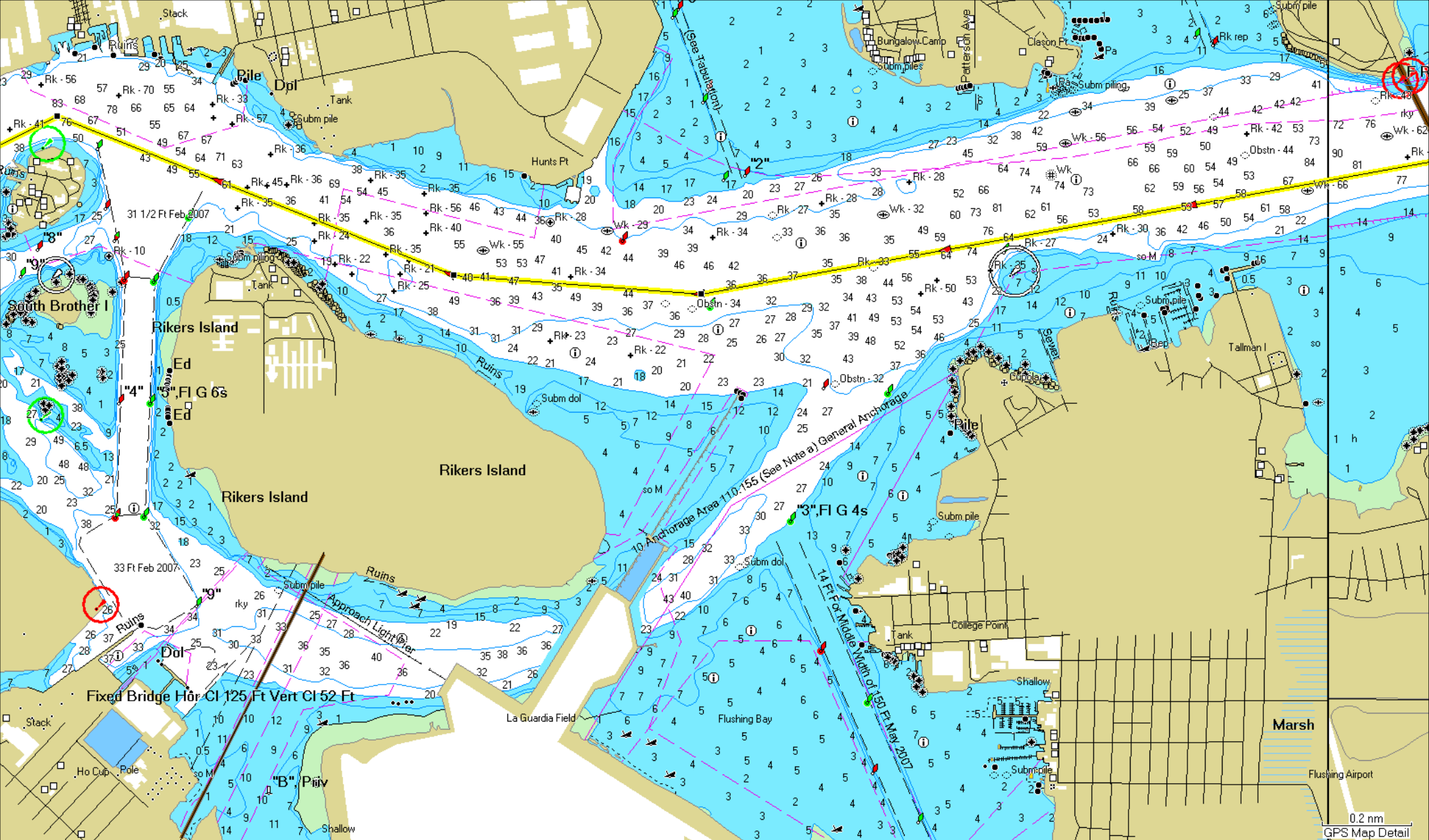


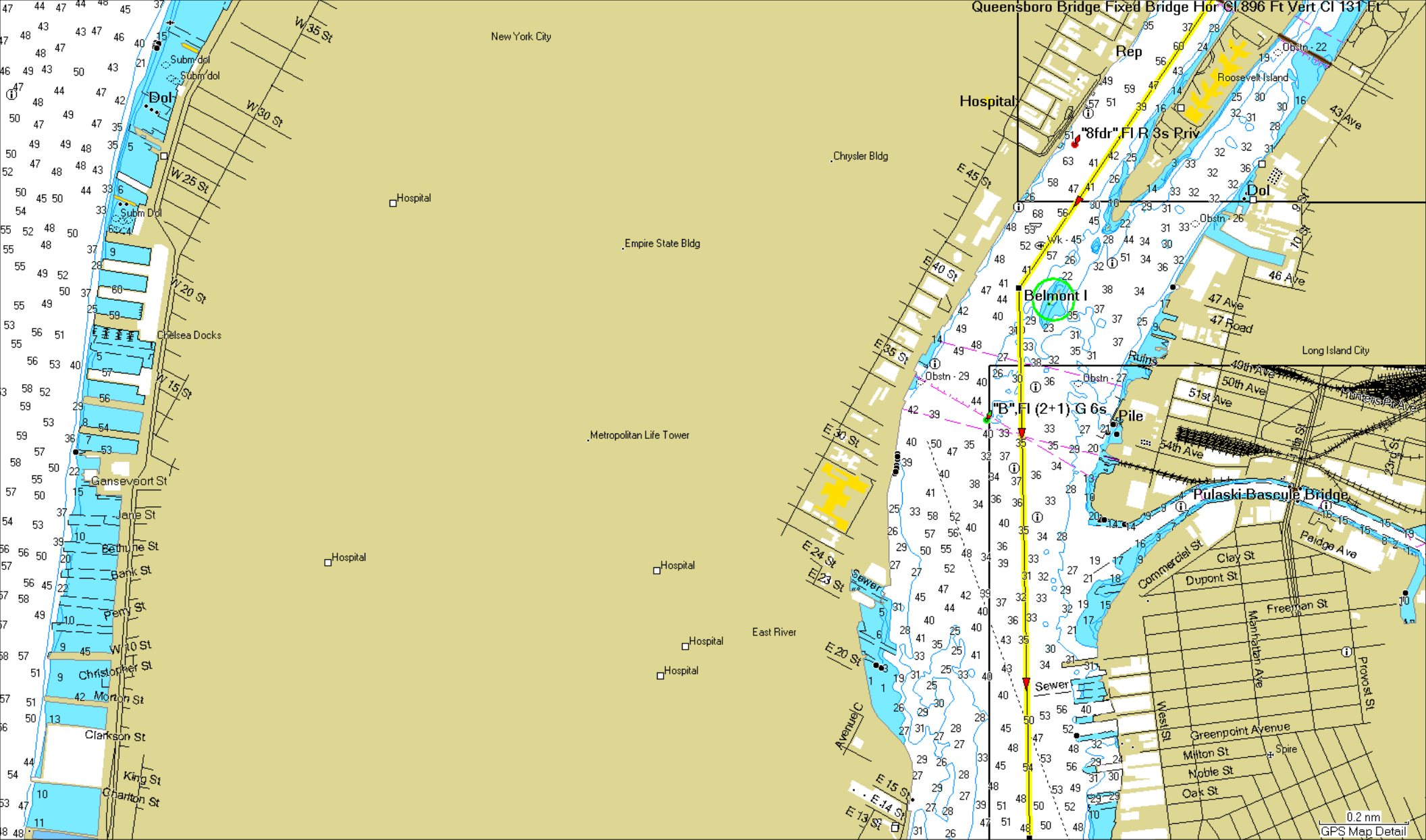
Portions may be © United Kingdom Hydrographic Office. . Portions © Her Majesty the Queen in Right of Canada, as represented by the Minister of Fisheries and Oceans, on behalf of the Canadian Hydrographic Service, (2008), 20060101-G; © Sa Majesté du chef du Canada, représentée par le ministre des Pêches et des Océans, au nom du Service hydrographique du Canada; This product has been produced by Garmin based on Canadian Hydrographic Service data, following any minimum standards / guidelines that may have been established by CHS, pursuant to CHS Digital VAR Agreement No. 240502001-001/2. Portions © Lewis Offshore Ltd. 2003-2008. Portions © NLHO 2005-2008. Reproduced with the permission of the Hydrographic Office of the Netherlands and UK Hydrographic Office, license no. NL AC-002-Garmin. Portions © Wavey Line Ltd. 2005-2008. Wavey Line charts are produced, in part, from products and with the agreement of Wavey Line Ltd. All rights reserved. This product has been derived in part from material obtained from the UK Hydrographic Office with the permission of the UK Hydrographic Office and Her Majesty's Stationery Office. © British Crown Copyright (2001-2008). License no. GB AC-002-Garmin. All rights reserved. This product is produced, in part, from products and with the agreement of Imray Laurie Norie and Wilson Ltd. UK. © Garmin Ltd. or its subsidiaries 1995-2008





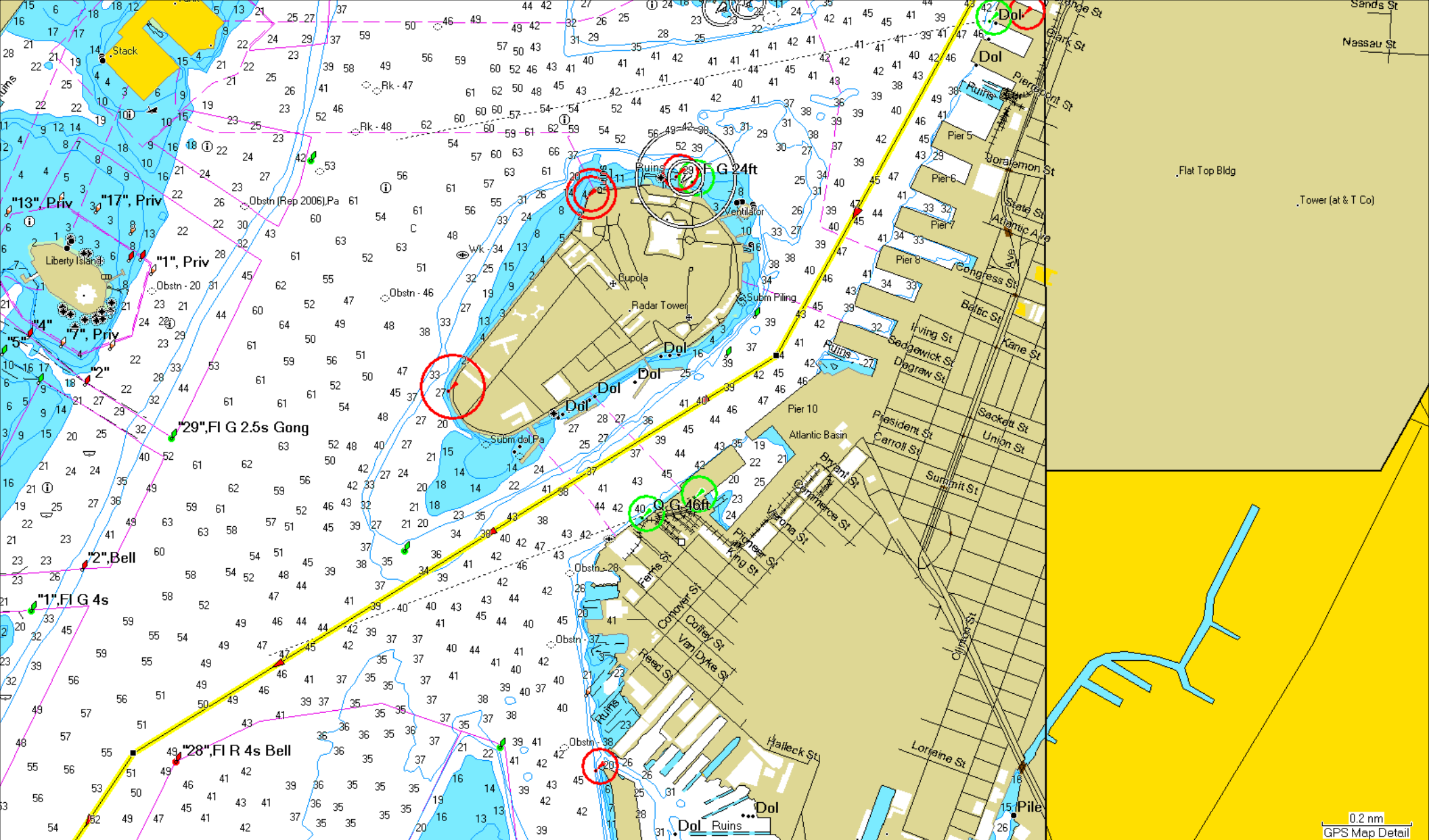




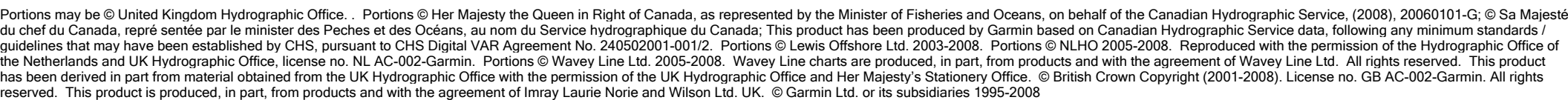


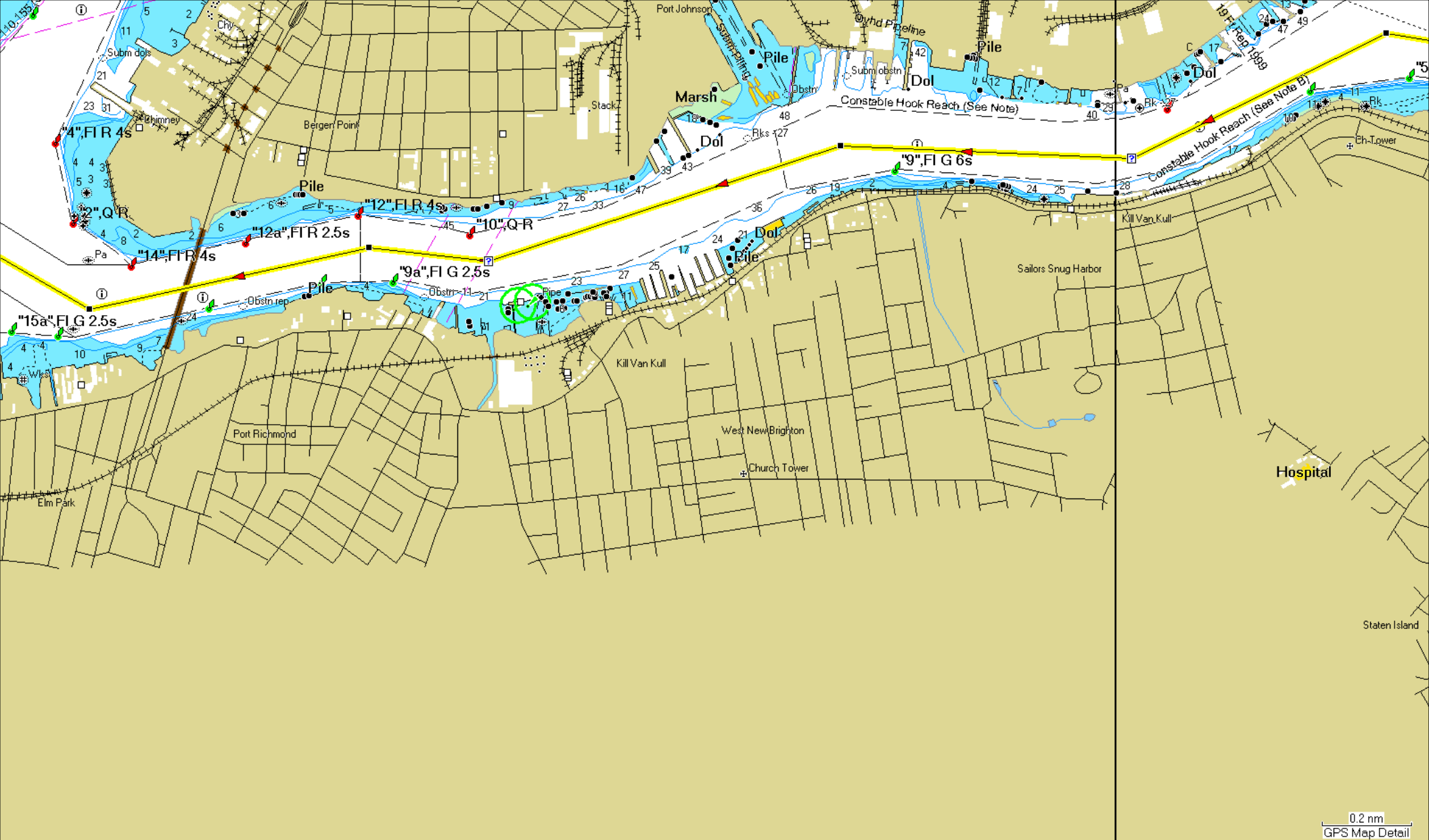


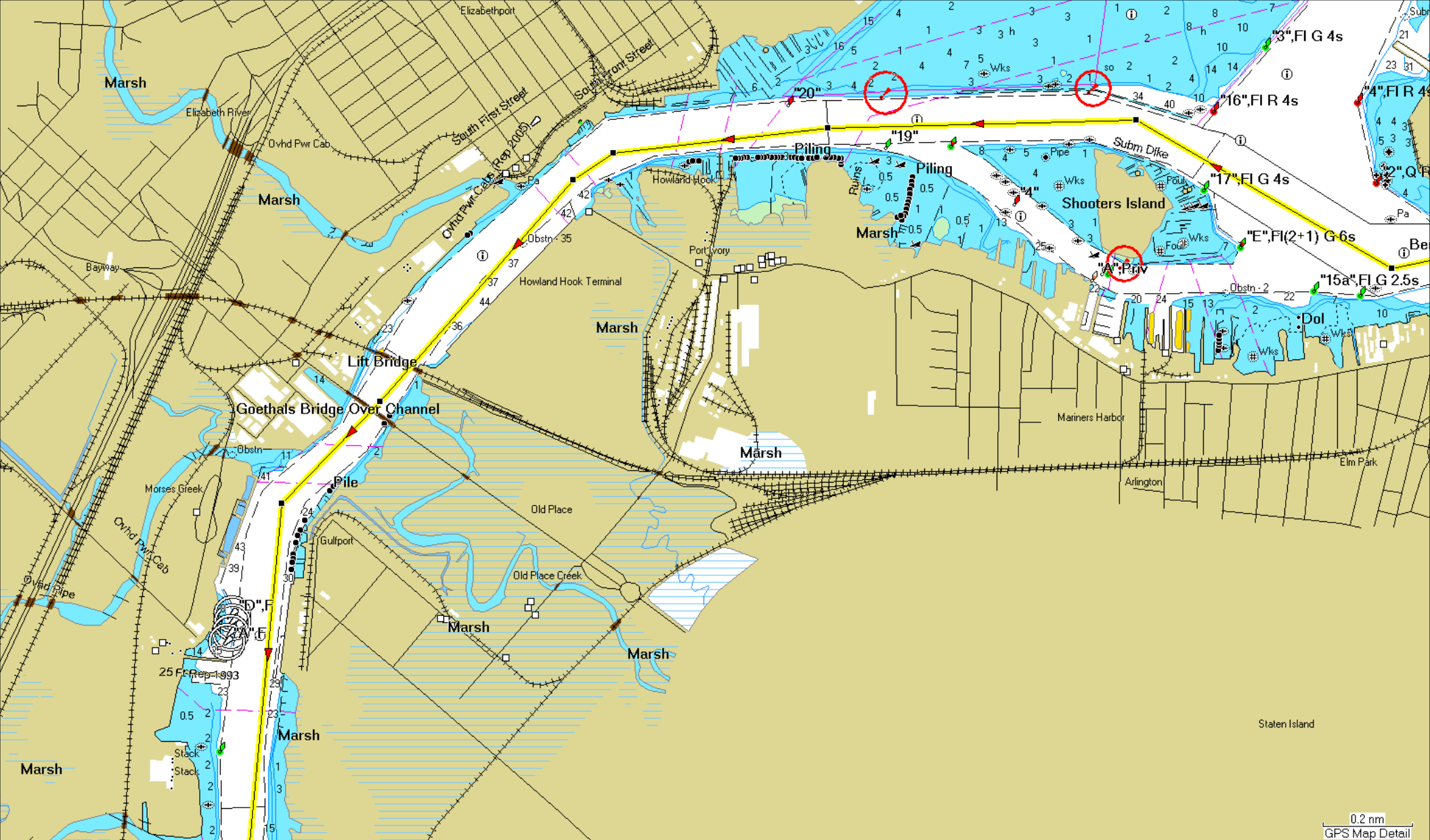




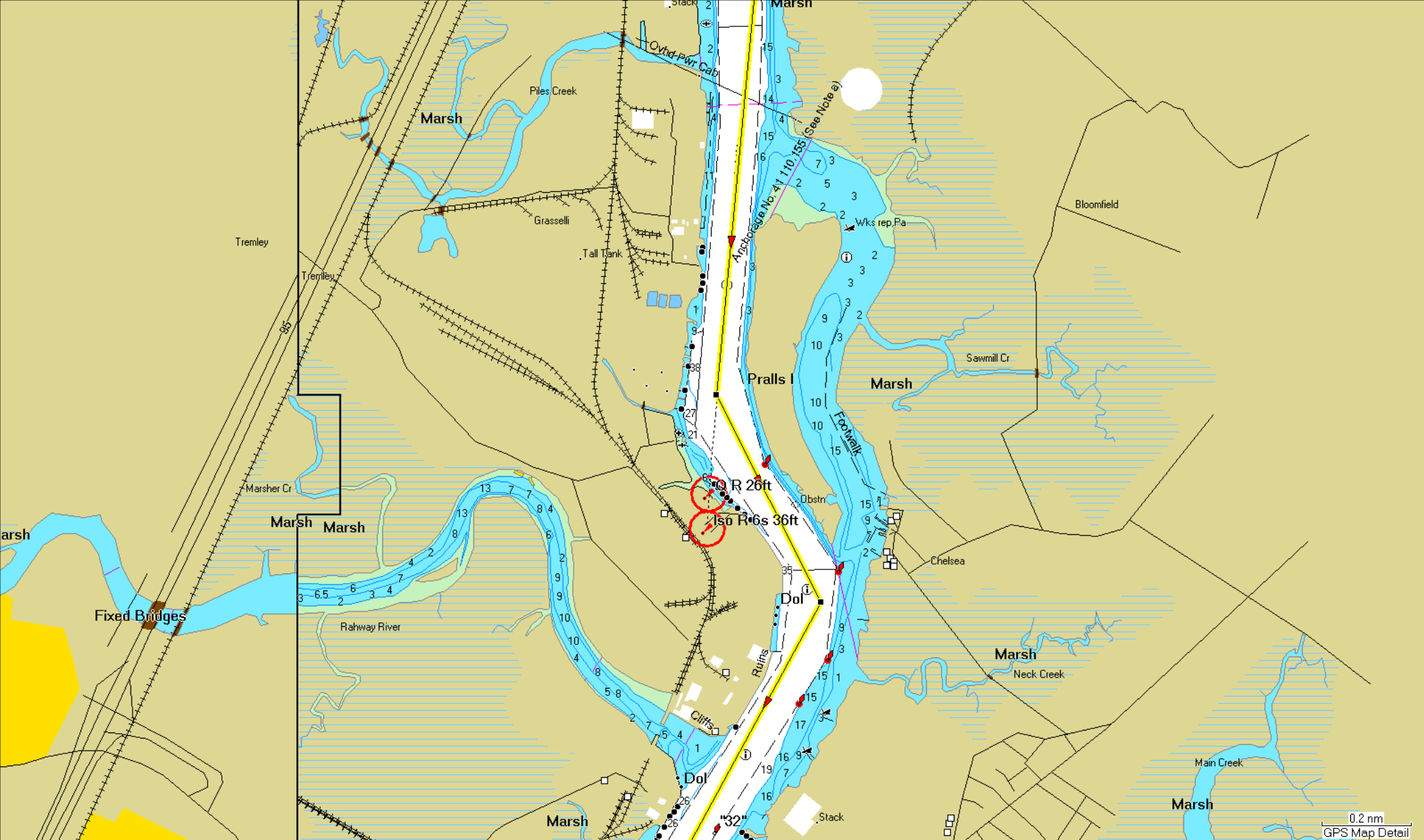


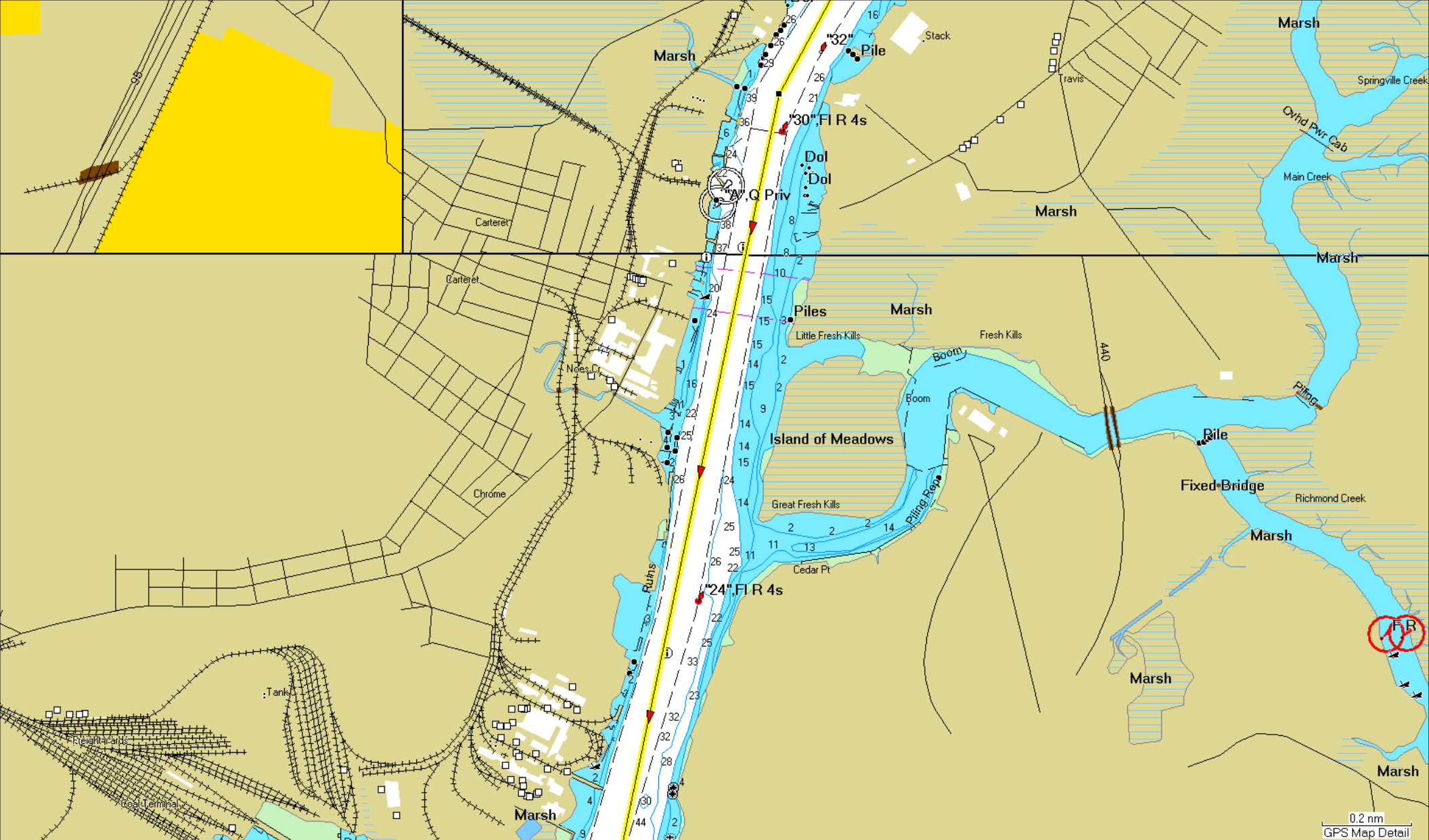


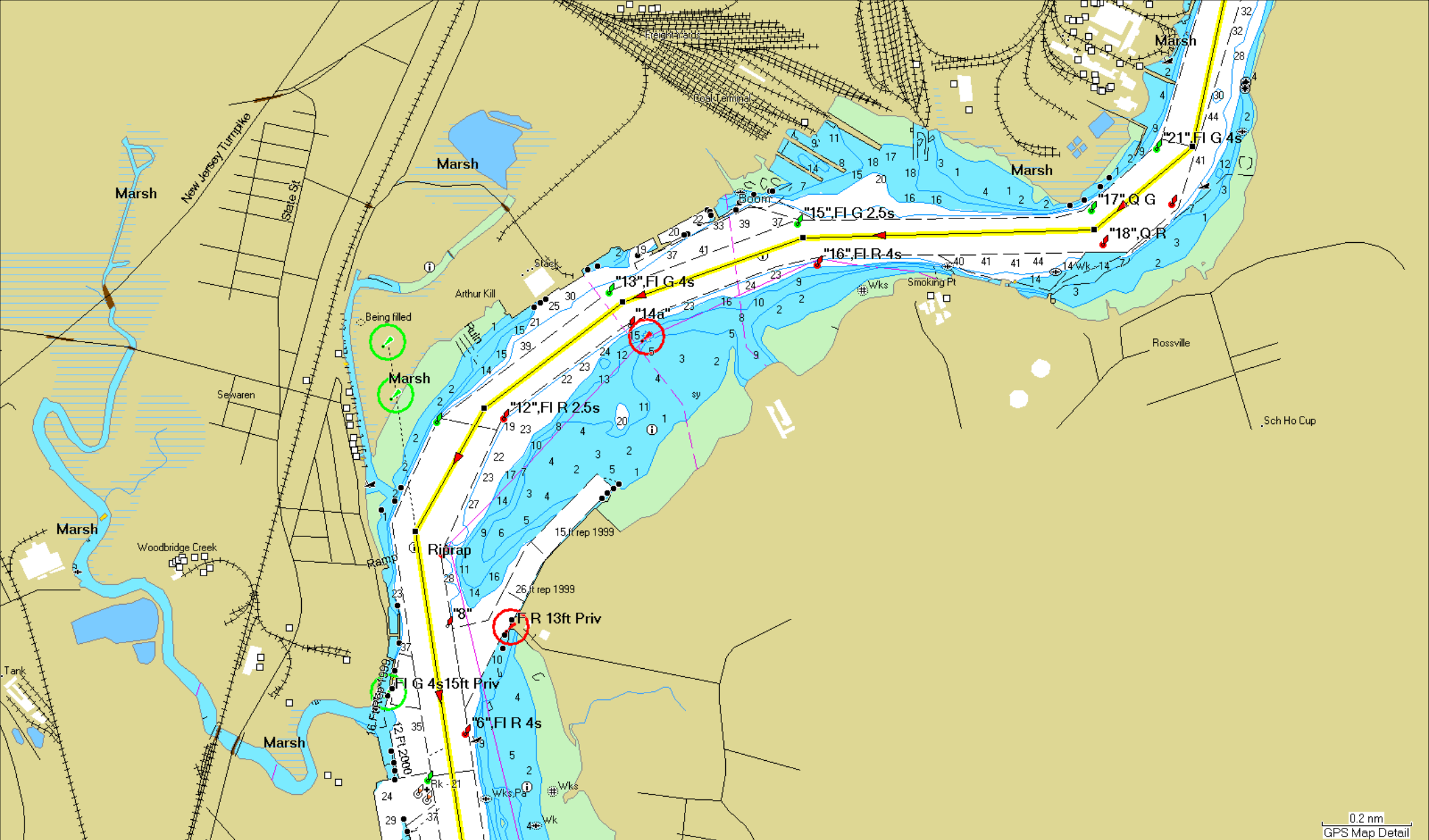




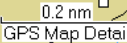












Portions may be © United Kingdom Hydrographic Office. . Portions © Her Majesty the Queen in Right of Canada, as represented by the Minister of Fisheries and Oceans, on behalf of the Canadian Hydrographic Service, (2008), 20060101-G; © Sa Majesté du chef du Canada, représentée par le ministre des Pêches et des Océans, au nom du Service hydrographique du Canada; This product has been produced by Garmin based on Canadian Hydrographic Service data, following any minimum standards / guidelines that may have been established by CHS, pursuant to CHS Digital VAR Agreement No. 240502001-001/2. Portions © Lewis Offshore Ltd. 2003-2008. Portions © NLHO 2005-2008. Reproduced with the permission of the Hydrographic Office of the Netherlands and UK Hydrographic Office, license no. NL AC-002-Garmin. Portions © Wavey Line Ltd. 2005-2008. Wavey Line charts are produced, in part, from products and with the agreement of Wavey Line Ltd. All rights reserved. This product has been derived in part from material obtained from the UK Hydrographic Office with the permission of the UK Hydrographic Office and Her Majesty's Stationery Office. © British Crown Copyright (2001-2008). License no. GB AC-002-Garmin. All rights reserved. This product is produced, in part, from products and with the agreement of Imray Laurie Norie and Wilson Ltd. UK. © Garmin Ltd. or its subsidiaries 1995-2008

